



We move the earth

Continental Earthmover Tyres

Continental Tyre Group Limited

Botanica Ditton Park

Riding Ct Road

Datchet

United Kingdom

SL3 9LL

Phone: 0845 6000 803

Email: specialty@conti.de

Web: www.continental-tyres.co.uk/b2b/earthmoving

We move the earth

Continental Earthmover Tyres







Our Tyre Portfolio for the Earthmoving Industry

We are a global player in tyre manufacturing. We design, develop, and produce a wide range of superior products for almost every form of mobility. From high-performance bicycles, to high-horsepower specialty mining equipment, we have a solution for almost every need.

We are much more than a tyre company - a major part of our business is dedicated to brake systems, instrumentation, vehicle electronics and infotainment solutions, as well as systems and components and technical elastomers. In short, we enhance driving safety and efficiency and see ourselves as the experts for driving performance.

Our customer-focused approach is the driver behind our production of cross-ply, radial, and solid tyres. This enables us to offer tyres that exactly match the needs and demands of our customers.

Our new Earthmoving tyre range is specifically designed for application in the very tough conditions of surface and underground mining as well as quarries and construction sites. Continental EM-Tyres are made to meet the highest level of performance, safety, and durability for every application, even in the harshest of conditions. We're sure that you will find the perfect tyre to meet your individual needs within this brochure.

Our Earthmoving Portfolio



EM-Master E3/L3 EM-M



DumperMaster



Articulated Dump Truck (ADT)



Master E4/L4



RDT-Master



EM-Master E3/L3 EM-Master E4/L4



r



DumperMaster



Rigid Dump Truck (RDT)



Loader



ContiEarth EM-Master

ADTs, loaders, and dozers are used for transporting large quantities of bulk or aggregate material in extreme conditions ranging from soft and muddy soil to gravelly and rocky terrain in construction or mining sites. Durability, excellent traction, and superior resistance to rock cutting and heat generation are essential to operate under extreme offroad conditions.

Continental's EM-Master is optimised for these specific demands. The tyre is available in two versions with different tyre tread designs. The EM-Master E3/L3 features a normal tread depth and wide spacing between the blocks. This results in excellent self-cleaning characteristics, good traction, and maneuverability even on sand or muddy terrain. The Conti EM-Master E4/L4 provides a smaller spacing between the blocks offering smooth running on hard surfaces. The deep tread depth results in a high protection against cuts and object penetrations.

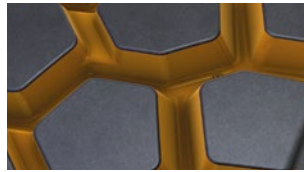


EM-Master E3/L3

Dimension	TRA	Type
20.5R25	E3/L3	TL
23.5R25	E3/L3	TL
26.5R25	E3/L3	TL
29.5R25	E3/L3	TL



Features and benefits



Tread blocks with multiple gripping edges for powerful traction on soft and muddy terrain



Wide space between blocks for outstanding self-cleaning abilities & for low heat build-up



Connection between centre blocks for improvement of traction capabilities & for smooth running



EM-Master E4/L4

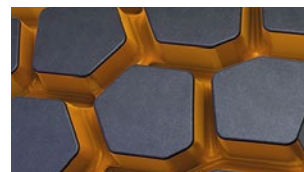
Dimension	TRA	Type
23.5R25	E4/L4	TL
26.5R25	E4/L4	TL
29.5R25	E4/L4	TL



Features and benefits



Tread blocks with multiple gripping edges result in powerful traction on gravelly and rocky terrain



Wider blocks and therefore less void than E3/L3 version for more carcass protection and smoother running



More wear volume than E3/L3 version due to deep tread design



ContiEarth RDT-Master

Rigid dump trucks are built to haul continuously heavy loads over longer distances. In these severe applications tyres have to offer high stability and good traction even at higher speeds. In addition, the tyres need to be extremely resistant to cut and tear. The RDT-Master is the perfect fit for transporting extra-heavy loads in adverse conditions. The special tread design with a deep tread depth and a wide and flat tread radius offers a high load capacity, excellent wear picture and good self-cleaning characteristics. The angled edges and the open shoulder design allow high lateral stability leading to better manoeuvrability and control when cornering.



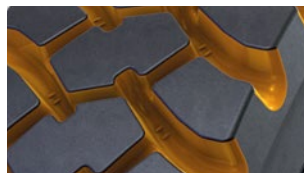
RDT-Master

Dimension	Compound	TRA	Type
18.00R33*	ST	E4	TL
	CR	E4	TL
21.00R33*	ST	E4	TL
	CR	E4	TL
24.00R35*	ST	E4	TL
	CR	E4	TL



ST = Standard Compound | CR = Cut Resistant Compound

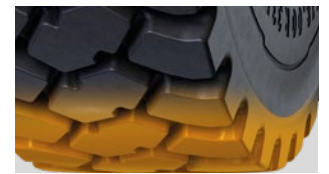
Features and benefits



High carcass protection against cuts and damage by foreign objects due to deep tread



Open shoulder design leads to perfect self-cleaning and enhanced traction

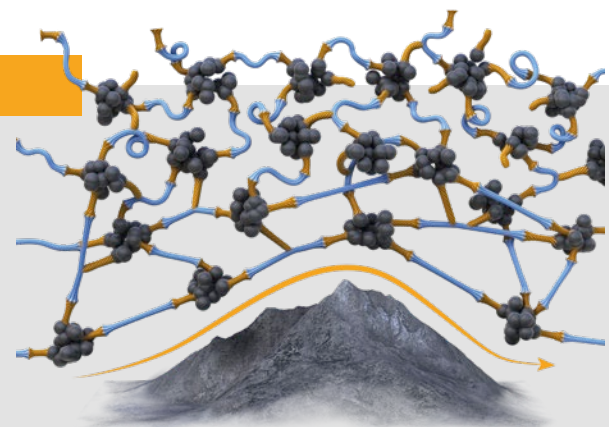


Wide tread with flat radius for maximum traction

Cut Resistant Compound

Polymer meshing system flexes over rough surface and obstacles keeping its structure after pressure release.

Extraordinary resistance to surface stress.





ContiMine DumperMaster

Engineered for ADTs (Articulated Dump Trucks) or heavy loaders operating under the harshest conditions in construction or mining applications. High load carrying capacity as well as the robustness of the tread and carcass are key criteria for the right tyre choice. Continental's DumperMaster is customised for these specific demands and comes with a four star carcass design and ultra cut resistant tread compound to master the application.



DumperMaster

Dimension	TRA	Type
26.5R25	E4/L4	TL
29.5R25	E4/L4	TL
35/65R33	E4/L4	TL



Features and benefits



Tread design for carcass protection and a longer service life

Open shoulder design for good self cleaning abilities & traction



Robust sidewall for better carcass protection against impacts & cuts



Carcass construction for maximum load capacity (based on inflation pressures up to 8 bar/116psi)

Driven by Data



Intelligent Earthmoving

Benefits of digital tyre monitoring

When transporting heavy loads on rough terrain, the tyres of the vehicles are permanently under pressure, day in and day out. Driving with underinflated or overheated tyres will lead to an increased fuel consumption and can cause premature tyre failures - a serious concern for the vehicle safety in your daily operations. As a mandatory consequence the inflation pressure and temperature should be monitored constantly. All Continental radial earthmoving tires are therefore equipped with our pre-mounted sensors. These sensors transmit data in real time to our stand alone or complete fleet monitoring solutions of your choice. Time consuming, manual tyre checks become a thing of the past.

Why Digital Tyre Monitoring?

One Example: Savings for a fleet of 15 vehicles.



1%

increase in
fuel efficiency¹



15 Min

saving for vehicle inspection
(195 hours/year)²



15%

longer tread life¹

¹ vs. a tyre that is 10% underinflated | ² Analysis by Continental based on customer experiences

Challenges



Harsh conditions that challenge the tyre increase the likelihood of tyre failure.



Vehicles transport **heavy materials** on tough road surfaces.



Lateral forces while cornering and operating speeds lead to **high temperatures** in tyres.



In vehicles operation the tyre temperature is increasing which leads to increasing **inflation pressure.**



Lack of time for frequent manual tyre checks. Need to focus on core business.

Solution

- Receive e-mail and SMS alerts or check your tyre pressure in the web portal before vehicles leave the depot to help prevent breakdowns in operation.
- Properly inflated tyres save you 1 % on fuel compared to a tyre which is just ten percent underinflated. Additionally, it increases casing life by up to 20 %.*
- Monitor tyre information for your entire fleet in web portal.
- Receive timely information on the tyres' operating condition and thus prevent premature failures and costly vehicle downtimes.
- Ensure correct inflation pressure during increasingly high operating temperatures. Receive accurate data and save time on manual pressure rectifications.

* Please refer to the tire manufacturer's load and inflation information to determine the tire's weight capacity and recommended air pressure.

Intelligent Earthmoving



Tyre sensor

Mounted onto the inner liner:
measures pressure and temperature from inside the tyre.



ContiPressureCheck

is the perfect single vehicle solution for monitoring tyre pressure and temperature by using one of the following options:

Single

is the easy entry solution using a display in the driver cabin and a Hand-Held Tool for monitoring

Integrated

includes the use of a telematics integration

ContiConnect

is the solution for multiple vehicles and transmits it to the ContiConnect web portal.

Yard

is the solution for vehicles which regularly return to dedicated checkpoints. The Yard Reader Station collects the data of your vehicles wirelessly.

Live

Is the optimal solution for remote control of the tyre pressure/temperature. Each vehicle is equipped with a Central Telematic Unit and the CPC. Tyre data is uploaded in real time to the ContiConnect web portal.

Sensor mounting is foreseen for 15" and above for pneumatic radial tire in tubeless applications. In case of further questions regarding sensor mounting in cross-ply / bias tyres, please contact your local Commercial Specialty Tyres (CST) Technical Customer Services or send an email to specialty@conti.de

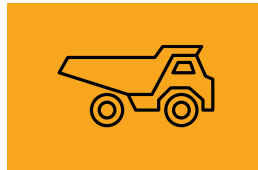
Benefits



Increase efficiency



Keep track of your assets



Maximize uptime



Safety



Sustainability

All Continental radial Earthmoving tyres are equipped with an intelligent tyre sensor that provides data in real time to ensure optimal tyre pressure and temperature



ContiPressureCheck

Single Vehicle Monitoring

ContiPressureCheck is a system for monitoring tyre pressure and air temperature via a sensor in the tyre, for a single vehicle. This system displays the collected data in the driver's cabin and sends a signal when tyre pressure is not optimal. ContiPressureCheck is a driver-centric system for single vehicles and can be integrated into third-party telematics solutions by enabling long-distance, wireless data transmission.

ContiConnect

Multiple Vehicle Solution

ContiConnect is a solution that easily connects multiple vehicles and helps fleet managers move from rigid, manual maintenance routines to targeted, on-time maintenance. The tool includes a yard reader/telematic unit that enables remote data collection and transmission. This information is transmitted to the Continental backend and then uploaded to the ContiConnect web portal. This way, drivers and fleet managers can check the data anytime and anywhere on the web. Tire problems are immediately identified. ContiConnect provides real time information 24/7, meaning potential tyre issues are immediately identified before causing downtime

Components needed by Solution

Single

- ▶ Display
- ▶ Hand-Held Tool (HHT)
- ▶ Central Control Unit (CCU)
- ▶ Tyre sensors

Integrated

- ▶ Hand-Held Tool (HHT)
- ▶ Central Control Unit (CCU)
- ▶ Tyre sensors
- ▶ In vehicle telematics integration proprietary

Yard

- ▶ ContiConnect Web Portal
- ▶ Hand-Held Tool (HHT)
- ▶ Yard Reader Station (YRS)
- ▶ Tyre sensors

Live

- ▶ ContiConnect Web Portal
- ▶ Hand-Held Tool (HHT)
- ▶ Yard Reader Station (YRS)
- ▶ Central Control Unit (CCU)
- ▶ Central Telematic Unit (CTU)
- ▶ Tyre sensors

Wheel Loader



1.2	4.2.4	1.2	4.2.4	YR	4.2.4	1.2	CTU
6.2	HHT	7.2	HHT	HHT		4.2.4	6.2

ADT



2.2	4.2.6	2.2	4.2.6	YR	4.2.6	2.2	CTU
6.2	HHT	7.2	HHT	HHT		4.2.6	6.2

RDT



2.2	4.2.6	2.2	4.2.6	YR	4.2.6	2.2	CTU
6.2	HHT	7.2	HHT	HHT		4.2.6	6.2

Underground Dumper



2.2	4.2.6	2.2	4.2.6	YR	4.2.6	2.2	CTU
6.2	HHT	7.2	HHT	HHT		4.2.6	6.2



ContiMine
Underground Mining Solutions

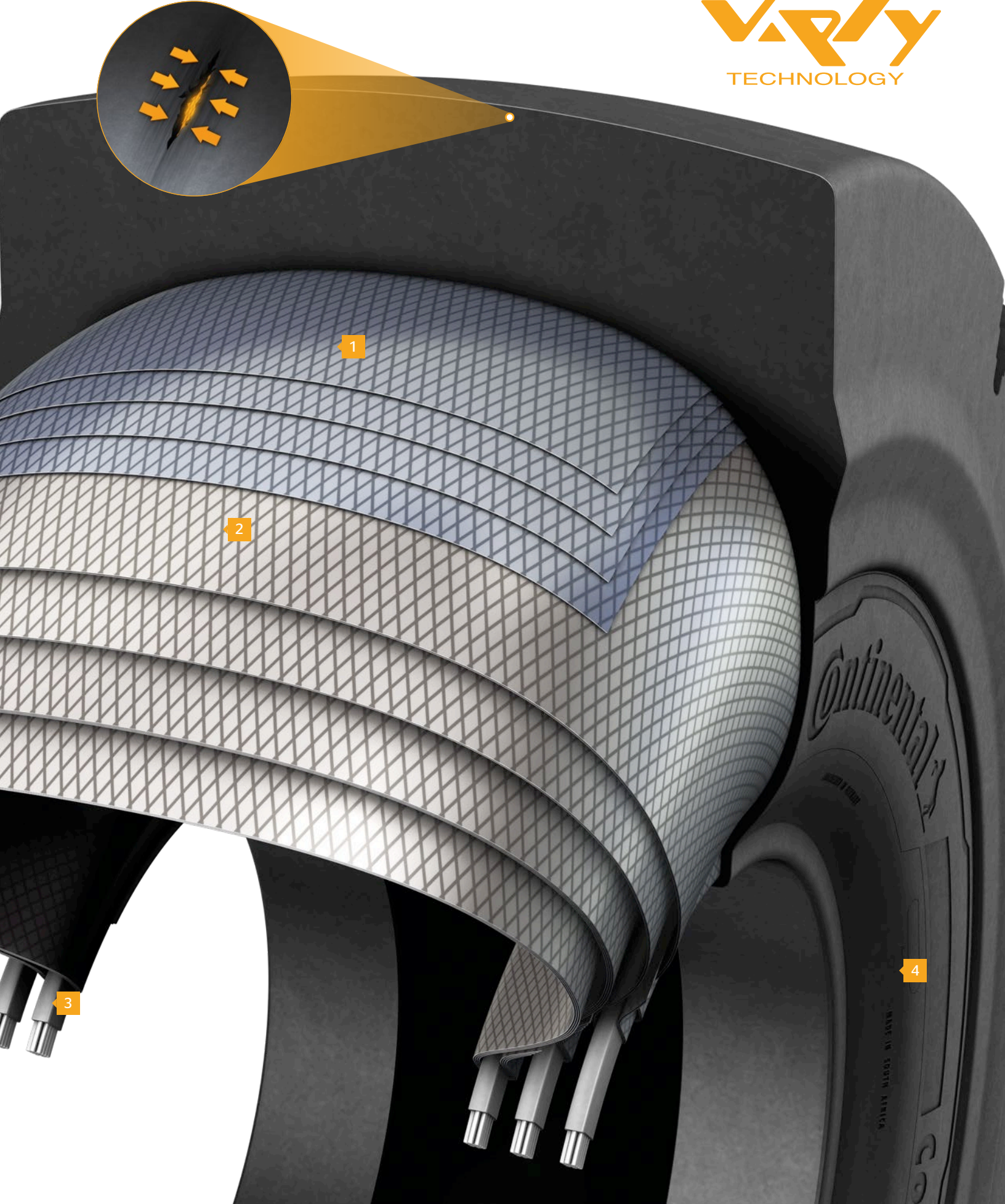


Every angle of the tyre is specially designed; even those you can't see.

Originally inspired by racing tyre design, the innovative V.ply technology enhances the cross-ply technology with multiple cords arranged in a recognizable V-shaped angle. V.ply technology combines extraordinary robustness and tyre stability with great rim seat, force transmission and steering response in demanding vehicle operations. The sharper angle of the carcass layers also means that the tread rubber gets slightly compressed, which is a major advantage in rough applications like underground mines where freshly blasted rocks are a constant danger to tyres. The tread cuts that these rocks generate are very hard to avoid but the growth of these cuts can be reduced by the compressed tread rubber. ContiCutCompress cannot eliminate the risk of tire damages but certainly reduces the growth of tread cuts and therefore improves the tyre performance.

- 1 Breaker layers**
Up to four V.ply breaker layers not only provide additional rigidity to the tread area, but they also function as an excellent bonding element between the outer rubber tread and inner polymer structure.
- 2 V.ply construction**
Up to 20 layers of high-resistance polymer fiber are aligned in a specially angled V-pattern. This unique technology is inspired by racing tyre design and means less inner movement for low rolling resistance.
- 3 Profiled inner bead**
In contrast to beads with a single round wire, the V.ply design is based on up to three bead wire bundles. The result is a wide bead, which provides even load distribution and perfect rim fit.
- 4 Strengthened sidewalls**
The V.ply technology allows for the design of exceptionally strong sidewalls. They provide low deflection for high damping, excellent driving stability, and superior protection against damage





1

2

3

4

Continental

MADE IN SOUTH AFRICA



ContiMine ScoopMaster

Loaders or Scoops transport heavy loads of orebodies at low speeds over a relatively short distance to dump trucks or conveyor belts. They often face freshly blasted, sharp rocks in wet and abrasive conditions. Durability, traction, and even wear are the most important tyre features.

Continental's ScoopMaster was developed to last in this extremely harsh under-ground mining environment. Premium quality tread and sidewall rubber compounds provide maximum resistance to rock cutting, penetrations, and tearing. The special V-ply construction in combination with the carcass rubber compound provides high carcass strength, excellent flex fatigue, and sidewall damage resistance.



ScoopMaster

Dimension	TRA	Type	PR
12.00-24	L5S	TT	20
17.5-25	L5S	TL	20
18.00-25	L5S	TL	28
26.5-25	L5S	TL	36



Features and benefits



Maximum casing protection against punctures and impacts

Wide contact area for reduced slippage, good traction, and even wear

High wear volume for optimum mileage performance



Additional cut-resistant rubber rib to protect casing in sidewall area where sharp rocks can damage the tire

Cut-resistant rubber compound for sidewall protection



Tread wear indicator (TWI) designed for easy and fast tread depth measurement

TWI shape prevents stone catching and carcass penetration



ContiMine DrillMaster

Specialised machines like Drill Rigs, Scalers, or Bolters are required for blast hole drilling in order to prepare for detonation, removal of loose rock after blasting, or the installation of rock bolts to support the roof. To drill blast holes as economically as possible, Drill Rigs cover rock cross sections of a hundred square meters and more. Therefore, the Drills use up to four booms, which result in very high tire loads when moving. High cutting resistance, good traction, and stability are essential for tyres used in these applications.

The Continental DrillMaster with its V-ply construction is the perfect choice: a highly cut-resistant rubber compound protects the carcass during operation in freshly blasted rocks. The tyre carcass is designed to stand heavy loads. The innovative zigzag tyre tread design offers the maximum amount of gripping edges in all directions to manage steep inclination and declination with tight cornering safely.

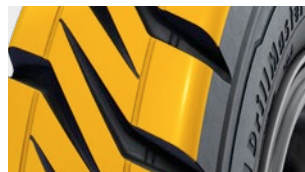


DrillMaster

Dimension	TRA	Type	PR
12.00-24	L4	TL	28
14.00-24	L4	TT	30

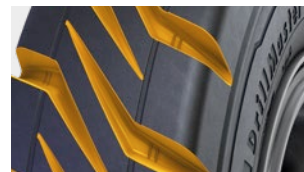


Features and benefits



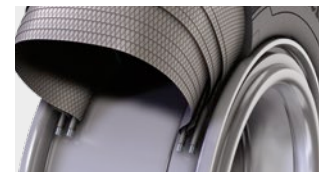
Zigzag design with multiple edges for maximum traction in circumferential and lateral direction

Connected tread block for increased stability especially during tight downhill cornering



Round shaped tread groove to reduce stone trapping

Extensive sea ratio of tread for high amount of gripping edges



High load capability due to V.ply carcass construction

Low heat build-up when driving long distances

Technical Data

ContiEarth

EM-Master E3/L3

All Steel Radial Technology

Tyre size	TRA code	Type	Transport		Loader		Rim	Overall diam. mm (inch)	Overall width mm (inch)	Tread depth mm (32")	Article no.	
			SR/PR	LI/SS	SR/PR	LI/SS						
25 inch												
17.5R25	E3/L3	TL	2*	167/B	2*	182/A2	25 - 14.00/1.5	1344 (52.9)	461 (18.1)	30 (38/32nd)	1270565	in preparation
20.5R25	E3/L3	TL	2*	177/B	1*	186/A2	25 - 17.00/2.0	1477 (58.1)	530 (20.9)	37 (47/32nd)	1270517	available
23.5R25	E3/L3	TL	2*	185/B	1*	195/A2	25 - 19.50/2.5	1594 (62.8)	617 (24.3)	39 (49/32nd)	1270516	available
26.5R25	E3/L3	TL	2*	193/B	2*	209/A2	25 - 22.00/3.0	1736 (68.3)	691 (27.2)	41 (52/32nd)	1270515	available
29.5R25	E3/L3	TL	2*	200/B	2*	216/A2	25 - 25.00/3.5	1843 (72.6)	759 (29.9)	46 (58/32nd)	1270514	available
750/65R25	E3/L3	TL	2*	195/B	1*	206/A2	25 - 25.00/3.5	1610 (63.4)	750 (29.5)		1270547	in preparation

EM-Master E4/L4

All Steel Radial Technology

Tyre size	TRA code	Type	Transport		Loader		Rim	Overall diam. mm (inch)	Overall width mm (inch)	Tread depth mm (32")	Article no.	
			SR/PR	LI/SS	SR/PR	LI/SS						
25 inch												
23.5R25	E4/L4	TL	2*	185/B	1*	195/A2	25 - 19.50/2.5	1609 (63.3)	603 (23.7)	49 (62/32nd)	1270562	available
26.5R25	E4/L4	TL	2*	193/B	2*	209/A2	25 - 22.00/3.0	1739 (68.5)	697 (27.4)	52 (66/32nd)	1270563	available
29.5R25	E4/L4	TL	2*	200/B	2*	216/A2	25 - 25.00/3.5	1852 (72.9)	780 (30.7)	59 (74/32nd)	1270564	available

RDT-Master

All Steel Radial Technology

Tyre size	TRA code	Type	Transport		Loader		Rim	Overall diam. mm (inch)	Overall width mm (inch)	Tread depth mm (32")	Article no.	
			SR/PR	LI/SS	SR/PR	LI/SS						
33 inch												
18.00R33	E4	TL	2*	191/B	-	-	33x13.00/2.5	1873 (73.)	518 (20.4)	54 (68/32nd)	1270554	available
18.00R33 CR	E4	TL	2*	191/B	-	-	33x13.00/2.5	1873 (73.)	518 (20.4)	54 (68/32nd)	1270557	available
21.00R33	E4	TL	2*	200/B	-	-	15.00 x 33/3.0	2000 (78.7)	603 (23.7)	58 (73/32nd)	1270555	available
21.00R33 CR	E4	TL	2*	200/B	-	-	15.00 x 33/3.0	2000 (78.7)	603 (23.7)	58 (73/32nd)	1270558	available
35 inch												
24.00R35	E4	TL	2*	209/B	-	-	17.00 x 35/3.5	2180 (85.8)	670 (26.4)	70 (88/32nd)	1270556	available
24.00R35 CR	E4	TL	2*	209/B	-	-	17.00 x 35/3.5	2180 (85.8)	670 (26.4)	70 (88/32nd)	1270559	available

All radial tyres, EM-Master, RDT-Master and DumperMaster are delivered with sensors ex factory

Technical Data

ContiMine

DumperMaster

All Steel Radial Technology

Tyre size	TRA code	Type	Transport		Loader		Rim	Overall diam. mm (inch)	Overall width mm (inch)	Tread depth mm (32")	Article no.	
			SR/PR	LI/SS	SR/PR	LI/SS						
25 inch												
26.5R25	E4/L4	TL	4*	210/A8	3*	214/A2	25 - 22.00/3.0	1769 (69.6)	690 (27.2)	57 (72/32nd)	1270519	available
29.5R25	E4/L4	TL	4*	217/A8	3*	221/A2	25 - 25.00/3.5	1870 (73.6)	774 (30.5)	59 (74/32nd)	1270520	available
33 inch												
35/65R33 (875/65 R33)	E4/L4	TL	4*	225/A8	3*	229/A2	28.00x33/3.5	2056 (80.9)	877 (34.5)	60 (76/32nd)	1270521	available
35/65R33 (875/65 R33) LC	E4/L4	TL	4*	225/A8	3*	229/A2	28.00x33/3.5	2056 (80.9)	877 (34.5)	60 (76/32nd)	1270598	in preparation

LC = Specialized for ADT operations haulage of up to 14 km distance per hour.

DrillMaster



Tyre size	TRA code	Type	Transport		Loader		Rim	Overall diam. mm (inch)	Overall width mm (inch)	Tread depth mm (32")	Article no.	
			SR/PR	LI/SS	SR/PR	LI/SS						
24 inch												
12.00-24	L4	TL	-	-	28	187/A2	8.50-24/1.3	1242 (48.9)	315 (12.4)	28 (35/32nd)	1230076	available
14.00-24	L4	TT	-	-	30	195/A2	10.00-24/1.5	1352 (53.2)	386 (15.2)	31 (39/32nd)	1230077	available

ScoopMaster



Tyre size	TRA code	Type	Transport		Loader		Rim	Overall diam. mm (inch)	Overall width mm (inch)	Tread depth mm (32")	Article no.	
			SR/PR	LI/SS	SR/PR	LI/SS						
24 inch												
12.00-24	L5S	TT	-	-	20	175/A2	8.50V-24/1.3	1269 (50)	321 (12.6)	57 (72/32nd)	1230079	in preparation
25 inch												
17.5-25	L5S	TL	-	-	20	181/A2	14.00-25/1.5	1362 (53.6)	446 (17.6)	69 (87/32nd)	1270566	in preparation
18.00-25	L5S	TL	-	-	28	199/A2	13.00-25/2.5	1632 (64.3)	509 (20)	88 (111/32nd)	1270567	in preparation
26.5-25	L5S	TL	-	-	36	209/A2	22.00-25/3.0	1789 (70.4)	706 (27.8)	95 (120/32nd)	1270568	in preparation

SR: Star Rating for Radial Tyres
 PR: Ply Rating for x-ply tyres
 LI: Load Index
 SS: Speed Symbol

Specifications are subject to change without notice
 For further technical information, see data sheets
 * For details regarding product availability, please
 contact your local sales representative.

Intelligent Earthmoving

Components



Display in the driver's cabin

- Display shows the status of the tyre and indicates 7 different types of warnings and the related tyre position in the driver's cabin



ContiConnect Web Portal

- Browser-based web interface for access to data, statistics and reports.



Receiver/Central Control Unit (CCU)

- Receives and evaluates signals from tyre sensors
- Generates warnings and provides them for display - Up to 24 tyres fitted on up to 6 axle



Hand-Held Tool (HHT)

- Initial configuration of entire system
- Wireless communication with tyre sensors
- Synchronizes tyre sensors to each wheel position
- Wired communication with CCU



Additional Receiver

- Integrated antenna and receiver to be used if:
 - Vehicle has an axle spread of more than 6m
 - Vehicle has more than 3 axles
 - A trailer is docked



Yard Reader Station (YRS)

- The connectivity component that receives data wirelessly from the tyre sensor upon returning to the yard.



Telematic Control Unit (TCU)*

- The Telematic Control Unit receives the processed data from the CCU and transmits it along with a GPS signal to ContiConnect webportal while the vehicle is moving in operation.



Tyre Sensor

- Integrated battery-powered tyre sensor with radio frequency transmitter - individual coding per running wheel
- Sends data every 2 minutes



Cleaning Scraper & Mounting Tool (for retrofitment of sensor)

- Scraper for pretreating the inner layer of the tyre
- Pressing tool including insert
- Tool for pressing on the tyre sensor during bonding

	Description	Article No.	
● Basic Kits	Kit 1.2: without additional receiver	17 34 115	
	Kit 2.2: with additional receiver	17 34 116	
	Kit 3.2: Trailer	17 34 117	
	Kit 5.2: Coach	17 34 120	
● Sensor Kits	Kit 4.2.2: 2 tyre sensors	17 34 124	
	Kit 4.2.4: 4 tyre sensors	17 34 118	
	Kit 4.2.6: 6 tyre sensors	17 34 119	
● Advanced Kits	Kit 6.2: TyreView (Display)	17 34 121	
	Kit 7.2: TyreConnect (Telematics cable)	17 34 122	
	Kit 8.2: TisWeb® Starter Kit Tyre	17 34 125	
Tyre Sensor mounting & spare parts	Cleaning Scraper	17 34 130	
	Mounting tool (tire sensor)	17 34 019	
	Insert - Mounting Tool	17 34 022	
	Set Tyre Sensor Container 12	17 34 072	
	Set Tyre Sensor Container 24	17 34 073	
	Set 1 OTR fixation patch	17 34 238	
	Set 6 OTR fixation patch	17 34 239	
	Set 10 OTR fixation patch	17 34 240	
	Spatula	17 34 021	
	Glue CB2250 1,6g	17 34 113	
	Glue CB2250 4,8g	17 34 112	
	Glue CB2250 9,6g	17 34 020	
	Set Sticker and Valve cap 2	17 34 123	
	Set Sticker and Valve cap 4	17 34 114	
	Set Sticker and Valve cap 6	17 34 088	
	System configuration & spare parts (Hand-Held Tool)	Set Hand-Held Tool incl. accessory	17 34 052
	Spare parts - System	Set Central Control Unit Truck/Bus	17 34 060
Bracket (Central Control Unit)		17 34 003	
Set Central Control Unit Trailer		17 34 061	
Additional receiver + Impact protection		17 34 056	
Impact protection (add. receiver)		17 34 055	
Bracket (additional receiver)		17 34 002	
Sub-harness A		17 34 008	
Sub-harness B		17 34 007	
Sub-harness C		17 34 006	
Sub-harness D		17 34 009	
Sub-harness D - large (13 metres)		17 34 067	
Sub-harness E		17 34 087	
Harness F+G		17 34 016	
Sub-harness H		17 34 017	
Sub-harness K		17 34 070	
Sub-harness L		17 34 069	
Display		17 34 011	
Display holder		17 34 012	
Display holder dashboard		17 34 071	
Pressure Check Indicator		17 34 013	
Fuse Kit F		17 34 036	
Connector Kit A+B+C		17 34 018	
Partner Case		Partner Case	17 34 134
		KIT CPC Partner Case	17 34 135
		Kit CPC Training Box	17 34 131
ContiConnect		KIT YardReader Station	*
		CTU (Central Telematics Unit)	*

*Please get in contact with our sales team for detailed information

Continental Tyre Group Limited

Botanica Ditton Park

Riding Ct Road

Datchet

United Kingdom

SL3 9LL

Phone: 0845 6000 803

Email: specialty@conti.de

Web: www.continental-tyres.co.uk/b2b/earthmoving