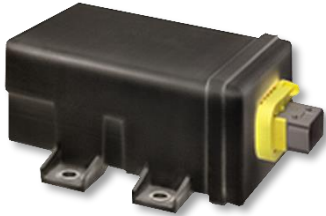


Customer Information – Central Control Unit



We are constantly monitoring the quality of our resources and products to provide the best possible product to you as our customer. We would like to inform you of an internal finding made during one of our regular product checks regarding the following product:

“Central Control Unit” (17341880000) contains the substance “lead” above 0.1% by weight, located in housing with a metal insert. In compliance with Article 33 of Regulation (EC) No 1907/2006 of the

European Parliament, we are herewith giving notice of that finding. The substance is on the candidate list for SVHC.

CAS no.	Substance name	Content
7439-92-1	Lead	>0.1 % w/w

The related entry in SCIP database is found under registration no. f52b215e-564c-4903-be4a-1f1f9d6cd08b.

Due to the encapsulation of the substance, there is no imminent hazard neither for humans nor the environment, if the product is used for its sole purpose.

The general disposal recommendation listed in the installation manual remains valid and can safely be executed at the end of the product's lifetime.

We will continue changing the production process to apply only lead-free substances. If you have any further questions, please contact: administrator.technical@conti.de